

Remote Request System

Version 1.0 - Single Remote Station
by SoftJock, Inc.

Contents

- [Overview](#)
- [Requirements](#)
- [Operation](#)

Server Side Topics

- [Controls](#)
- [Setting up your shared track library](#)
- [Loading files to your DJ Software](#)

Client Side Topics

- [Setting up the client](#)
- [Connecting to the server](#)
- [Updating the track list](#)
- [Disconnecting](#)
- [Sending an Index Request](#)
- [Sending a Text Request](#)
- [Shortcut keys](#)



OVERVIEW

Remote Request is a system that allows you to take requests from your customers while on the job DJ'ing. It is a simple concept that makes use of networking, to have a kiosk type client station, where users can browse through you songs, without bothering you at your console.

You have the option of sharing your song list with them, and they can pick and choose their request from that list, or send you a typed in request if you give them a keyboard.

The server side is simple; it allows you to drag the songs requested right into the DJ software of your choice (providing that software can accept standard dropped files from Windows).

The software will index both MP3 and WAV files on your computer, and can also integrate directly with our RockIt Pro DJ software, utilizing it's library, if you so choose.

REQUIREMENTS

In order to use the Remote Request System, a computer with the client software is needed, and a network connection between that computer and your DJ computer.

Any simple network that supports TCP/IP will suffice, and includes, but is not limited to; wired networks, wireless networks, USB networks, etc.

The client side software is set up to utilize a standard keyboard/mouse combo, a keypad, XKeys controller, or touch screen monitor or overlay. The client computer does not have to be exceptionally fast, but should run Window's 2000 or XP. The screen resolution for the client is best set at 800 x

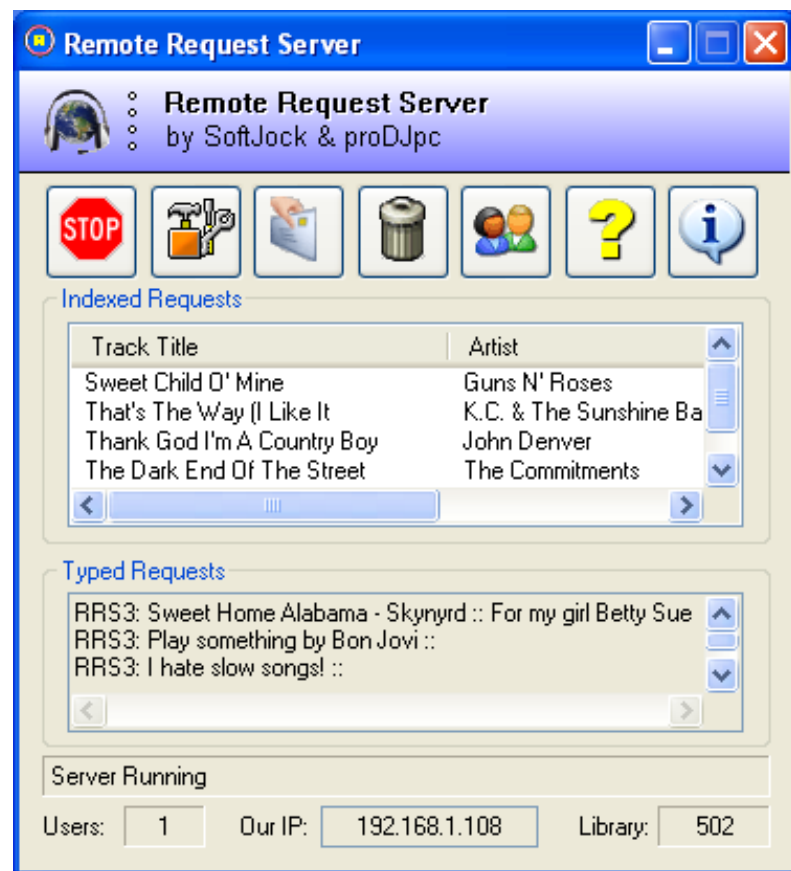
600 pixels, as the client screen will fill nearly the entire screen, and the rest can be blacked out in the options.

800 x 600 resolution also makes it easier for the users to press the controls on a touch screen.

OPERATION

SERVER SIDE TOPICS

Controls



The Remote Request Server has a minimum of controls so it takes up a small footprint on your DJ computer. The buttons are:

Start/Stop - Either starts or stops the server.
Setup - Enters the Setup Screen.
Send Msg - Send a text message to a client.
Trash - Clear both lists.
User Manager - Disconnect user(s).
Help - View this file in your browser.
Info - Program credits.

The Indexed Requests list is where tracks can be dragged from to your DJ application.

The Typed Requests list is where you will see any requests and dedications that have been typed in at the client station.

The Status line shows whether the server is running or not.

Users: Number of clients connected to this server.

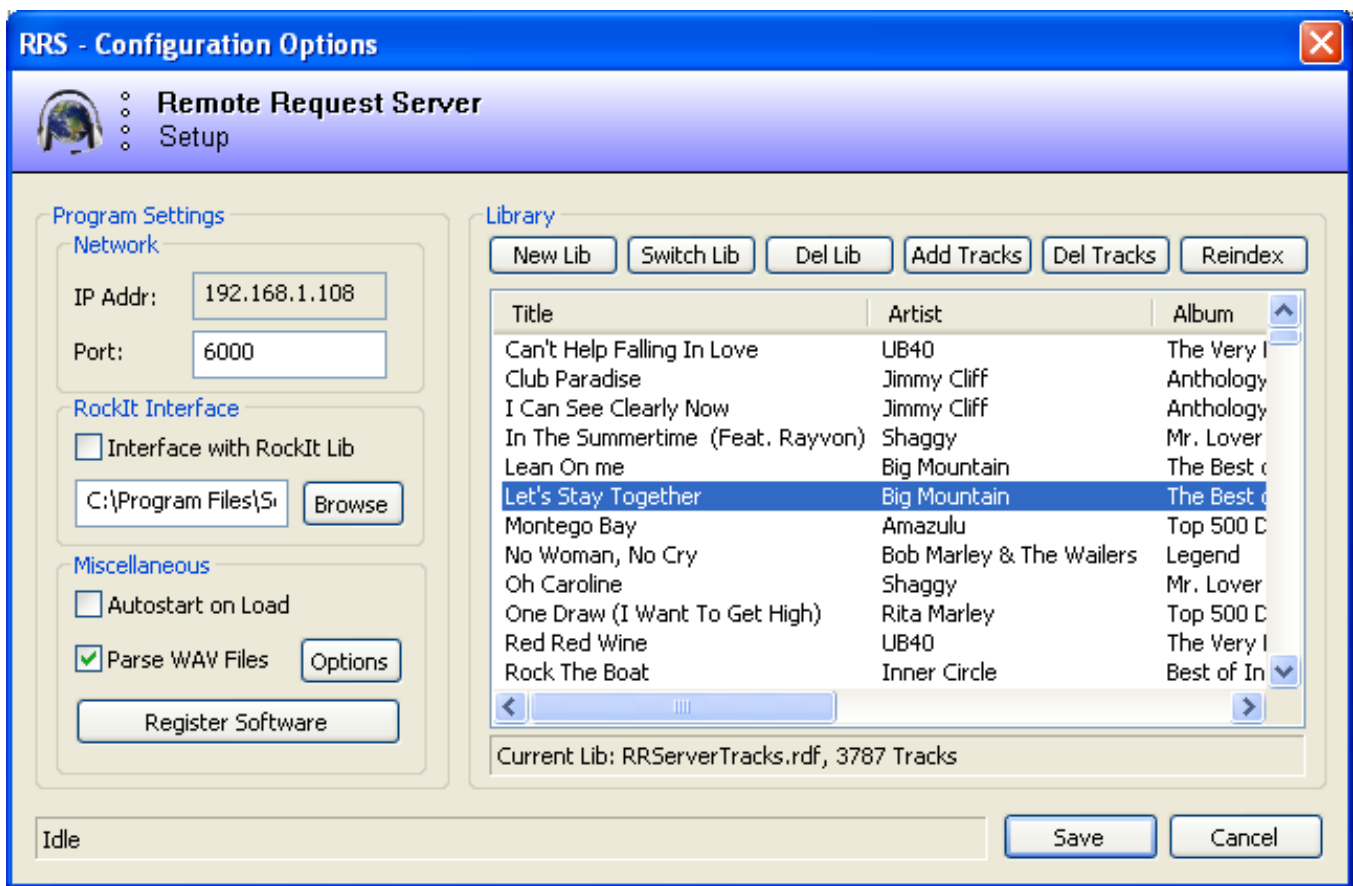
Our IP: The IP address of this computer.

Library: Number of songs available for the client to see.

Setting up your shared library

You can share whatever amount of songs with the client station(s), as you see fit. As a general rule, it is probably not advisable to share too many tracks, as the users will spend all their time looking, and never select a request. If you are as most of us DJ's, you probably already have your tracks stored in some sort of hierarchy on your hard drive(s), which will make it easy for you to add only the songs you want the user to see.

When you start the server software, you will want to go into the Setup, and Add the tracks to your library. Click the button with the little toolkit on it, and you will be presented with the following setup screen:



PROGRAM SETTINGS

Network Settings:

IP Addr: Your IP Address will probably be different, depending on your network setup. The program will automatically look this up for you, and it cannot be changed.

Port: This is the port that your server will listen to when communicating with the clients(s). The default is 6000, and should be fine. If you change it on the server side, you must also change it on the client side.

RockIt Interface:

This allows you to interface with a RockIt Pro DJ library. If you are using RockIt Pro DJ, you will already have your library setup, so you will have nothing further to do, other than click Browse, choose your RockIt library, then click the button that says Interface with RockIt Lib. Your track list will then show up to the right. The buttons above the track listing will be disabled if you interface with a RockIt library, as you cannot make changes to that library outside of the RockIt program. RockIt is usually installed in the following folder that you can browse to: C:\Program Files\SoftJock\RockIt\32 (32 being the current version of RockIt).

Miscellaneous:

Autostart on Load: If this button is checked, the server will automatically be started when you start the program. Otherwise, you will have to click the Start/Stop button to start the server.

Parse WAV Files: This option is if you utilize WAV file formats. WAV files have no standard tag information, so you can direct Remote Request to get the information from the filenames if you have them setup correctly. Clicking on Options, will bring up the following screen:



These are the way most rippers will tag your WAV filenames, and you can choose the one that best suits your setup.

If the Parse WAV Files option button is not checked, the program will use the entire filename for the title of the track, and the Artist and Genre fields will contain N/A.

Register Software: If you click this button, you will be able to Register the software after you purchase it, and remove all restrictions on the trial version.

Library Options

New Lib: Allows you to create a new library to add songs to, and share with the clients.

Switch Lib: Allows you to switch to a different library.

Del Lib: Allows you to delete libraries.

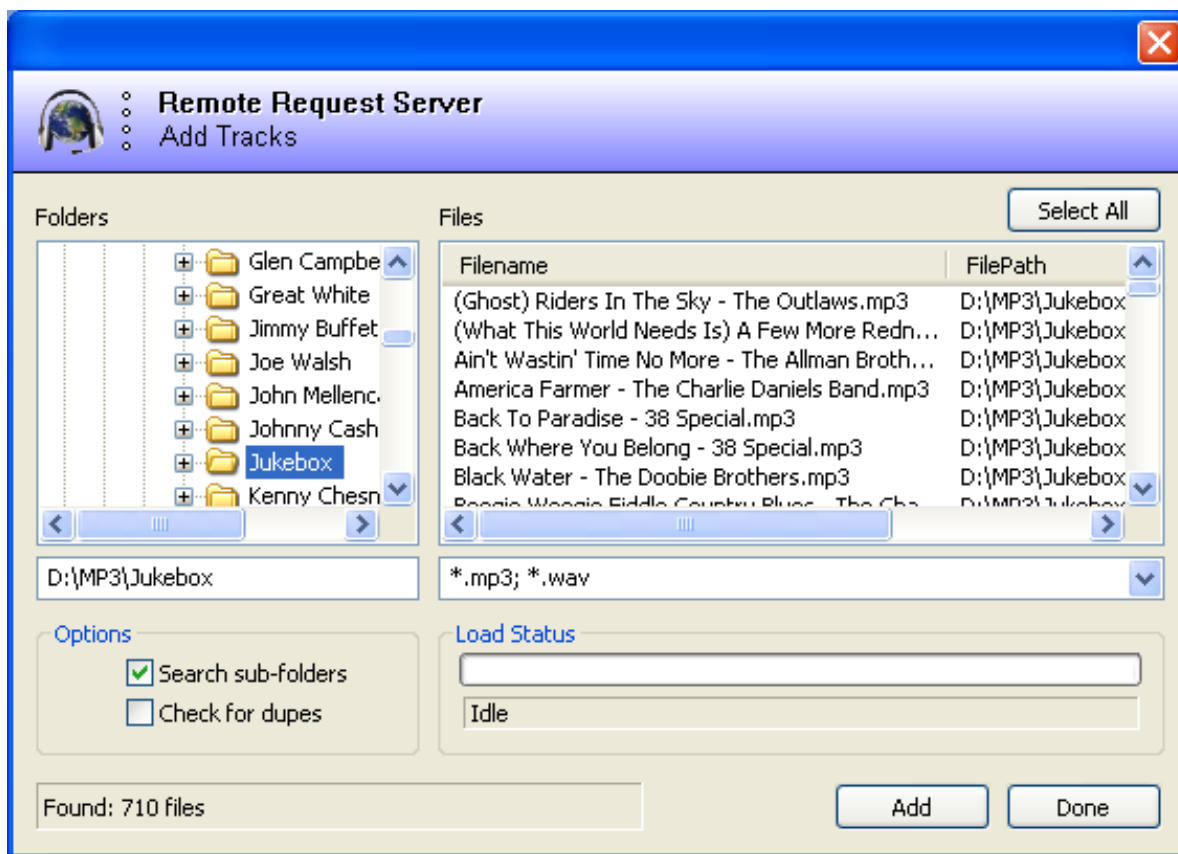
Add Tracks: Allows you to add songs to your current library (see below for more info).

Del Tracks: Will delete any tracks currently highlighted.

Reindex: Will reindex your tracks in the current library, starting from number 1.

Add Tracks

Clicking the Add Tracks button, brings up the following screen:



Drives and folders are displayed on the left. If you highlight a drive or folder, a list of MP3 and WAV files will show on the right side file list (provided there are MP3 or WAV files in that folder). If Search sub-folders is checked and you highlight a drive or folder, the program will search through any folders underneath. This option is off by default, as it allows quicker loading of the Add Tracks screen.

Once you have your file list on the right, you can simply click the Select All button (or manually select files), and then click the Add button, and the tracks will be parsed and added to your library. If Check for dupes is checked, the program will check each file against its list, and see if there are matching filenames. If it finds a match, it will not add the duplicate track. Note that if you have a very large library, this can slow down the adding of tracks, as it has to look through the entire list for each track to be added.

Click Done when finished to return to the main Setup screen.

Loading Files to your DJ Application

Simply highlight the track in the Indexed Requests list, and drag it into the DJ software. Any window that can accept standard Window's file drops, should be able to accept the file and load it.

In RockIt, you can drag the track to a player deck, a player queue or the jukebox queue.

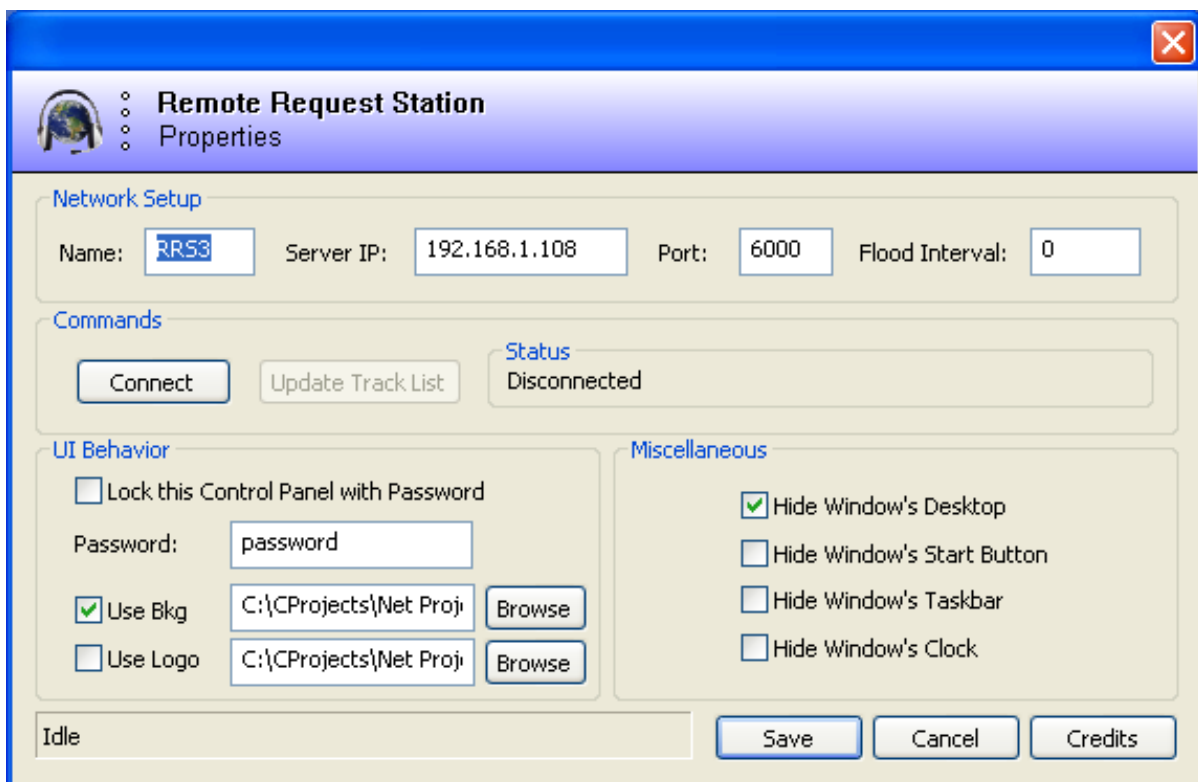
CLIENT SIDE TOPICS

The client application is not included in the server install, and is available as a separate download from our website (remoterequest.softjock.com).



Setting up the Client

The client setup is very simple. You access the setup options by using the Ctrl+O (Oh, not zero). The options screen looks like this:



Network Setup:

Name: This is a name to give your client, so it can be identified by the server easily. We used RRS3 here for demonstration purposes, but you

can call it what you want. You should keep the name short, no more than 5 characters, because it will take up screen space on the server side on the typed requests.

Server IP: Here you enter the IP address of the server, which is shown as Our IP on the server side screen.

Port: This is the communications port used on both sides, and must be the same on server and client. The default is 6000, and should not interfere with any other network assets.

Flood Interval: This is an important tool, as it restricts how often a user can send a request, so they don't flood you with them. The default setting is 20 seconds, and will probably suffice, although you can change it to what you want (in seconds). When a user sends a request, the program will countdown the seconds on the client screen, and not allow any more requests to be sent until the countdown is complete.

Connect Button: This allows you to connect/disconnect from the server. There are also shortcut keys you can use from the main client screen, see the table below.

Update Track List Button: This will send a message to the server requesting the track list be sent to the client. This is also available as a shortcut from the main client screen.

Lock This Control Panel: If this is checked, a password is required to access the Options screen.

Password: The default is the word "password" without the quote marks. You can change this to whatever suits your needs, and will be required if the above Lock is checked.

Note: *The following two items can be changed, but the software license agreement requires that the SoftJock logo or text be prominently displayed on any skin you create. You can contact us if you want to build your own skin and need a copy of the logo.*

Use Bkg: The client comes with two background skins, and you can make your own if you like, following ours as a template. We recommend you use the default though, as it presents a unified look that users will become used to.

Use Logo: You can use a logo in conjunction with the background skin.

Miscellaneous:

These options are for presenting a nice clean look to your client computer, and should all be checked when you initially setup the client. It will keep the users away from your Window's controls.

Hide Window's Desktop: This will hide all icons on your desktop, and also hide any desktop background you have while Remote Request is running.

Hide Window's Start Button: This will hide the Window's Start button, usually located at the bottom left of the taskbar.

Hide Window's Taskbar: Hides the taskbar at the bottom of the screen.

Hide Window's Clock: Hides the clock on the lower right.

Save Button: Saves all changes you've made to the options. Some changes require a restart of the program, notably the screen settings, skin and logo.

Cancel Button: Cancels out without saving.

Credits: Displays the About box with program credits.

Connecting to the Server

You can either use the connect button in the options screen, or use Ctrl+C to connect to the server. If the server is not running, or the network is not setup and running, you will receive an error message.

Updating the Track List

You can do this from either the Options screen, or by pressing Ctrl+U to request the track list be sent from the server to the client. You should only need to do this once, when you initially connect to the server. The speed at which the update takes place will be dependent on your network speed, and the number of tracks the server needs to send. On our test network (100 Mbps wired), our test database of about 4,000 tracks is sent in about two seconds, your mileage will vary.

Disconnecting from the Server

This can be done either from the Options screen, or by pressing Ctrl+D.

Sending an Indexed Request

There are several ways of sending a request, depending on your hardware configuration for the client. If you have a keyboard/mouse combo, you can simply double click the track in the list, and it will be sent. If you have a touch screen, or overlay, you can just press the track in the list. If you have just a keypad or XKeys controller, you can just key in the index number, and click Enter.

Sending a Text Request

If the client is equipped with a keyboard, the user can type in a request and dedication, and click send. Alternatively, there is also a shortcut key, see table below.

Shortcut Keys Table

Key Combination	Usage
Ctrl+B	Go to bottom of list.
Ctrl+C	Connect to server.
Ctrl+D	Disconnect from server.
Ctrl+I	Clear the current index number being displayed in the black box.
Ctrl+O	Go to Options screen.
Ctrl+P	Repopulate the track list.
Ctrl+T	Go to top of list.
Ctrl+U	Request updated track list from server.
Ctrl+X	Exits the program.
Alt+A	Sort by Artist name.
Alt+G	Sort by Genre.
Alt+T	Sort by Title.
Shift+C	Clear text entry boxes.
Shift+T	Send text request to server.
Up Arrow	Scrolls up one page at a time.
Down Arrow	Scrolls down one page at a time.
Enter	Send an index request that was keyed in, and is displayed in the black index box.

Numeric Keypad Keys

Used to enter an indexed request.

Copyright © 2005-2006, SoftJock, Inc. All Rights Reserved.